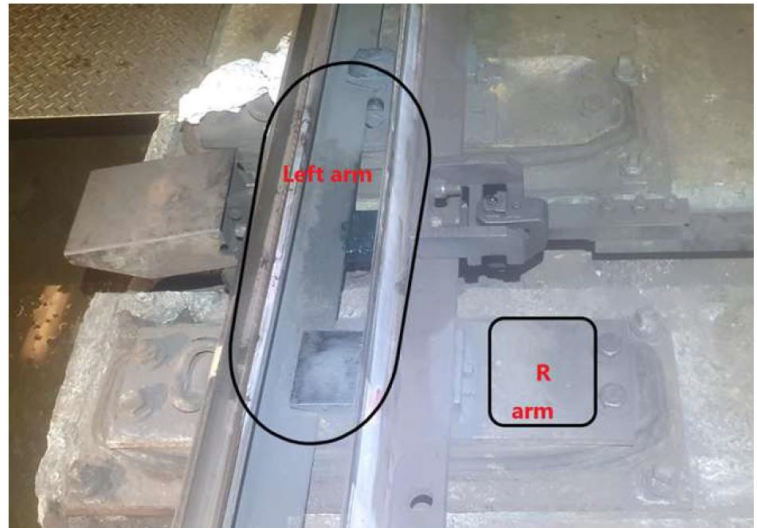


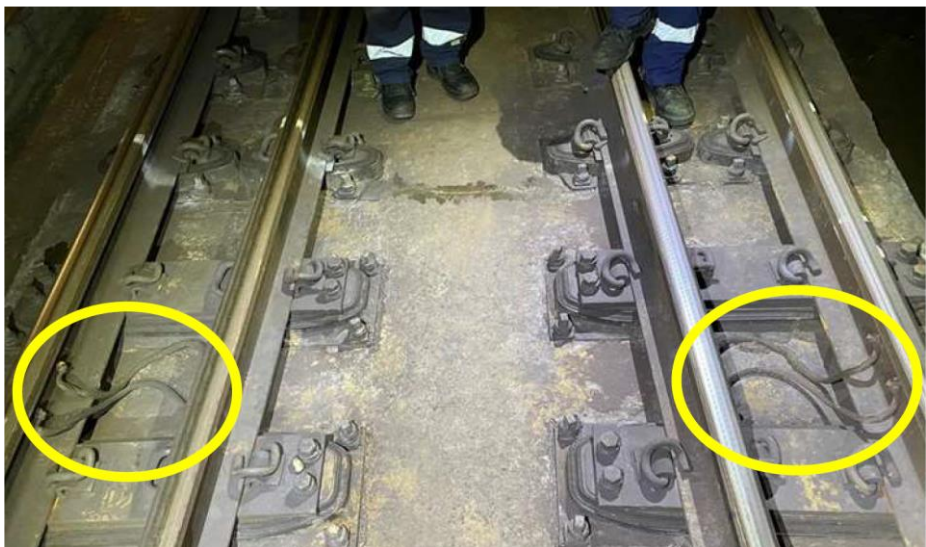
Incident Name	Worker received Extra Low Voltage shock from Rail
Date of Incident	23 <sup>rd</sup> of August 2021 Time: 12:15am
Classification	First Aid Accident
Location of incident	Sydney Metro Northwest Rail Network on Track at Macquarie Park Points 21



“Photo Above of Location of MQP-PM21 where the Electrician sustained the ELV Shock”  
 “The below photos are additional photos taken by the Alstom Electrical Compliance team representative”

The work involved a team of 3 Signaling technicians commenced Night shift and their planned scope of works was to perform Points Maintenance tasks at Macquarie Park MQP11 & Switch Blade adjustments and Lubrication of claw locks on MQP21.

Technician 1 had just completed tensioning the bolts on the Operation Bar shown. Whilst still kneeling the Technician's left arm was resting on the rail and his Right arm contacted the Fish plate that led to the Technician receiving an Electric Shock



The NSW UE ITAB would like to thank Alstom in participating and sharing important knowledge of an electrical incident with our industry stakeholders for educational purposes and teaching moment.

For more information, please contact Jared Barclay, Electrical Compliance Officer at Alstom Australia Pty Ltd via the NSW UE ITAB at [tony@uensw.com.au](mailto:tony@uensw.com.au).